



VIEWNOW[®]

INTERDRIVE CLIENT

Secure, high-performance NFS file and printer sharing for Windows desktops

Award-winning ViewNow[®] InterDrive[®] Client, recognized for its outstanding reliability and performance, provides Microsoft Windows users with fast, easy, and secure network access to resources on NFS servers. A single interface simplifies the sharing of files between multi-vendor systems, including UNIX, IBM mainframe, VMS, and OS/2 platforms. With ViewNow InterDrive Client, users can seamlessly access directories, files, printers, disks, CD-ROMs, Zip drives, and other network devices. ViewNow InterDrive Client is the only NFS client available today with Kerberos 5.0 authentication support.

Tight integration boosts user productivity and security

The ViewNow InterDrive Client is integrated with Microsoft Windows XP, Windows 2000, Windows NT, and Windows 98 SE operating systems and user interfaces. Users and administrators can effortlessly configure NFS connections, passwords, global or individual connection properties, and tuning options from Windows Explorer or Network Neighborhood. Right mouse button support is linked to the Properties menus, so you can easily set operational parameters. Kerberos 5.0 support in ViewNow InterDrive Client provides security through user authentication and data encryption for client/server applications.

Optimal performance under changing conditions

Dynamic auto-tuning capabilities optimize performance under constantly changing network conditions. For example, auto-tuning adjusts read/write sizes based on the number of packet re-transmissions that might occur due to network collisions or hardware problems. The auto-tuning feature is optional and can be selected as required.

Caching improves application performance

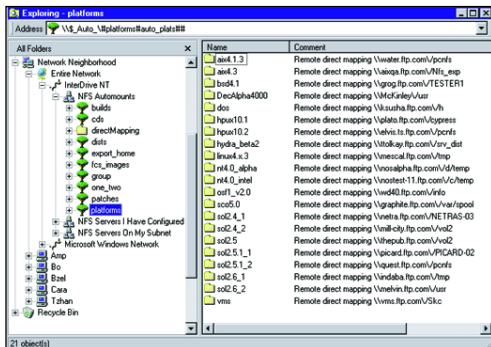
ViewNow InterDrive Client uses the Windows Cache Manager (VCache) and its own internal cache mechanism to locally store information about network files and folders. Caching improves the performance of any application using network files. VCache support provides unlimited dynamically allocated memory. ViewNow InterDrive Client also takes advantage of the many features of the NFS 3.0 protocol that enhance performance, including efficient directory look-ups – now executed in a single transaction – plus read/write caching and larger read/write data sizes. To ensure optimum network performance, 32-bit, multi-threaded, kernel-space implementation works at the same level of priority as the operating system.

NFS simplified

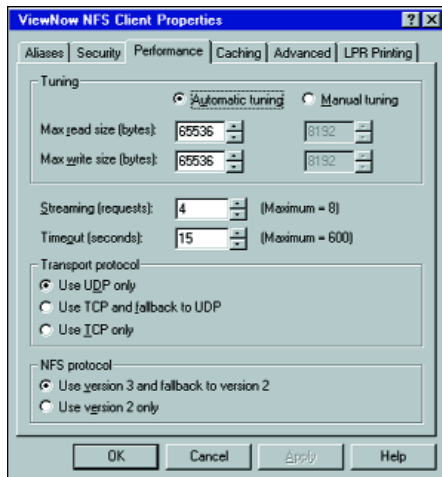
Making NFS connections is easy. Users select network drives, directories, files, printers, and other devices in the same way they select them on the Windows desktop. A shorthand name or alias can be assigned to the long network path that was previously required to reach NFS resources. Resources appear in the Network Neighborhood with common

Benefits

- Windows XP and Windows 2000 ready
- Authentication through NIS, PCNFSD protocols, or Kerberos 5.0
- Superior NFS 3.0 performance and unsurpassed reliability in high-traffic environments
- Mapped Direct NFS drives search for or connect only to NFS Servers
- Auto-tuning and cache buffering deliver maximum performance
- Easily customizable settings for NFS connections, passwords, global or individual connection properties, and tuning options



NIS Automap integration with Windows Explorer provides a centralized directory service of available resources to NFS clients.



Auto-tuning optimizes performance as network conditions change. Read/write caching and expanded read/write sizes dramatically improve performance. Select UDP or TCP transport protocols according to your network requirements.

names for designated hosts. Aliases have their own settings for security, performance, and permissions – or they can use system or host defaults.

ViewNow InterDrive Client includes Network Information System (NIS) Automap integration within Windows Explorer. This integration provides a centralized directory service that graphically displays remote NIS auto-mount maps and the configured resources available to NFS clients. Users only need to know the appropriate NIS server to find listings of available resources.

File locking and sharing maintains file integrity by preventing more than one user at a time from opening and changing a file.

Managed access

ViewNow InterDrive Client provides user authentication for file and printer sharing with NIS or PCNFSD protocols. These security features help protect sensitive data residing on network servers. In addition, users can check disk quotas by clicking on "My Computer" and viewing the properties of a networked drive. The UNIX remote quota daemon and NFS Client are used to retrieve and to report on disk quotas. This unique feature allows users to plan and modify disk utilization before it becomes a problem. No other NFS product has this capability.

Create a direct path to NFS servers

For faster NFS file connections, ViewNow InterDrive Client gives users the option to establish a direct path to NFS servers in Windows Explorer. This Direct NFS drive is used to avoid connection conflicts with other network clients in multi-protocol environments.

Direct NFS extends the Microsoft Universal Naming Convention (UNC) capability by recognizing the reserved Direct NFS path as a direct pointer to the NFS infrastructure, thus avoiding collisions and improving performance for both graphical and command-line applications. Direct NFS also expands the networking capabilities of 16-bit Windows and DOS applications running in 32-bit environments that do not support the Microsoft UNC to allow browsing of network file servers.

Product Specifications

System Requirements

- Processor is the same as required for the Windows operating system
- 75 MB free disk space for full install
- Windows XP, Windows 2000 Pro, Windows 2000 Server, Windows 2000 Advanced Server, Windows NT SP6a, or Windows 98 SE
- NT user account administrator privileges
- Compatible with 32-bit Windows Sockets-compliant TCP/IP stacks including Microsoft and FTP Software stacks

Network Server Requirements

- ViewNow InterDrive Client works with servers that support NFS protocols 3.0 or 2.0 for NFS file sharing and printing

One of the following:

- PCNFSD 2.0 or 1.0 authentication protocol
- Network Information Services (NIS) authentication services
- Kerberos 5.0 authentication services

For a complete list of product features and specifications, visit the NetManage Web site: www.netmanage.com.



Corporate Headquarters

NetManage, Inc.
20883 Stevens Creek Boulevard
Cupertino, CA 95014 U.S.A.
T +1.408.973.7171 F +1.408.257.6405
sales@netmanage.com
For the location of the NetManage office nearest you, visit www.netmanage.com