



Powerful, secure, Windows-based, multi-host access for the evolving enterprise

RUMBA provides connectivity from Microsoft Windows desktops to virtually any host system, across any network, with mission-critical reliability. Innovative features increase user productivity, reduce total cost of ownership, and simplify enterprise migrations to browser-based and server-based computing. RUMBA software makes it easy to connect to and use information on IBM mainframe, IBM iSeries AS/400, UNIX, Hewlett-Packard, and VAX systems. RUMBA is a key component of NetManage Solutions. NetManage Solutions modular-based products ensure optimal performance and fast, flexible application development.

More Host Access Options

RUMBA provides access to a broad range of host types, including IBM mainframe, IBM iSeries (AS/400), Hewlett-Packard, UNIX, and VAX. Because you need only one vendor and one application for a multi-host environment, deployment and support is faster, easier, and more cost effective.

Increased User Productivity

RUMBA enables business users to work productively with host-based information within a user-friendly Windows environment or from a familiar Web browser. It provides all the core functionality of a Windows-based emulator, from multi-session support and host printer emulation to a variety of file transfer and host-based graphics options.

Windows 2000 and XP Certified

RUMBA users can take advantage of Windows 2000 and XP features and functions, including Active Directory Services, enhanced power management, and roaming user support.

A powerful bridge between the desktop and the data center, RUMBA software is

ideal for companies migrating to Windows 2000 or Windows XP, or for organizations that are simply upgrading from older connectivity products.

RUMBA is the right solution for businesses that want to increase returns on their technology investments while lowering their total cost of ownership.

Protect your valuable host information from internal and external threats

High-Powered Security

Client-to-host communication is secure. No major architectural changes are required for deployment because RUMBA software adapts to the highest level of security available via your organization's existing host security, network security, firewalls, and virtual private networks (VPNs). RUMBA products contain embedded Secure Sockets Layer (SSL) technology for secure terminal and FTP sessions to host computers.

Benefits

- **NetManage Solutions component** – enables administration efficiency while reducing the cost and complexity of accessing host applications
- **Rich security features protect valuable information assets**
- **iSeries single sign-on reduces costs and simplifies user interactions with hosts**
- **Connects Windows desktops to virtually any host, across any network, with mission-critical reliability**
- **Leverages your PC-to-Host access customizations when you migrate to the Web**
- **Innovative productivity features generate a greater and faster ROI**
- **Reduces TCO and increases control with time-saving administration features**
- **Windows 2000/XP Certified and supports XP enterprise technology roadmap**



RUMBA Security Services adds protection for users that connect via the Internet. Its patented technology provides persistent terminal and FTP sessions via the standard HTTPS port on your existing firewalls or proxy servers, making it easier than ever to extend access to external users while protecting your information assets.

iSeries Single Sign-On

RUMBA iSeries single sign-on feature streamlines client authentication and reduces administrative costs. Administrators are able to configure and manage a single login process that extends to the iSeries system through the use of Kerberos technology, which is also standardized and integrated by IBM and Microsoft. Centralized user profile management simplifies host access administration and makes monitoring and compliance reporting easier.

Streamline business processes to meet your current and future needs

Customization and Ease of Use

Comprehensive productivity and ease-of-use features reduce the need for support and training. System administrators can even custom configure the menu bar of the RUMBA window to meet exact requirements of each user or organization.

Robust, Flexible Technology

RUMBA supports display and host application printing, native file transfer, and flexible keyboard mapping. The software also includes an intuitive, point-and-click macro editor.

VBA-type Scripting Support

Enables automation via scripting to improve end-user productivity and streamline business processes. Supports the execution of existing OnWeb Web-to-Host, ViewNow, and/or competitive scripts on the RUMBA PC-to-Host platform, reducing administrative costs associated with multi-client-type installations and consolidations. NetManage Migration

Wizard provides an easy migration of large, complex Attachmate® scripts to RUMBA with no administrator intervention required.

Custom Application Development

Support for a wide range of APIs, including EHLLAPI, CPI-C and APPC, provides maximum flexibility and convenience for programmers, developers, and other IT professionals.

Streamline Software Administration

Centralized administration significantly lowers total cost of ownership through server-based software deployment and maintenance. Microsoft Installer technology lets system administrators service and upgrade systems easily from a central network server.

RUMBA is a key part of NetManage Solutions, so administrators can monitor and report on RUMBA client activity through its monitoring and reporting service. This service collects information from Access Services, Web-to-Host, or OnWeb clients and

stores it in a SQL database. It provides standard or custom client reports that can be defined by an administrator.

Section 508 Compliant

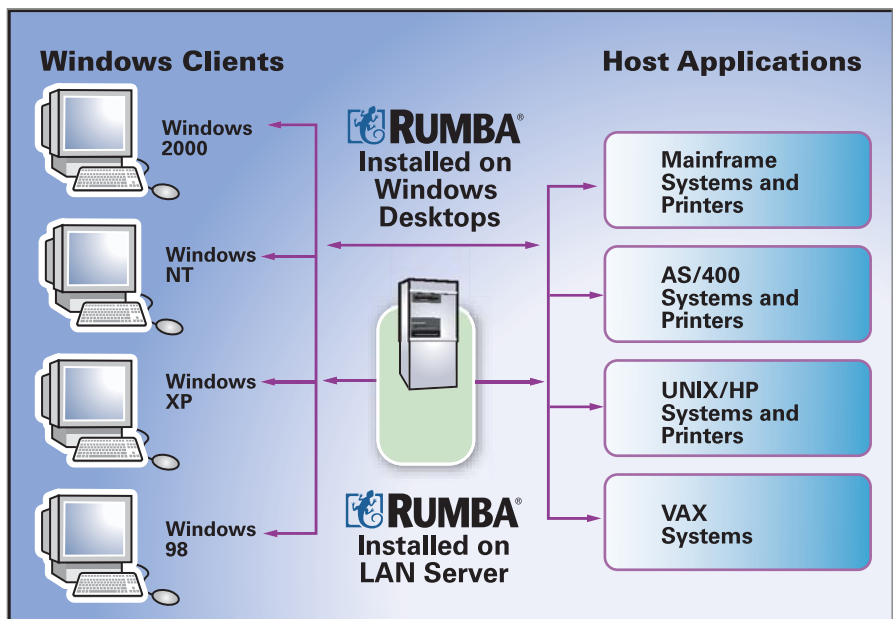
RUMBA has been designed to be compliant with the U.S. Government standards as defined by Section 508 of the U.S. Federal Rehabilitation Act amended in 1998. This set of standards provides for access to information by people with various visual, tactile, or aural handicaps.

Comprehensive Technical Support

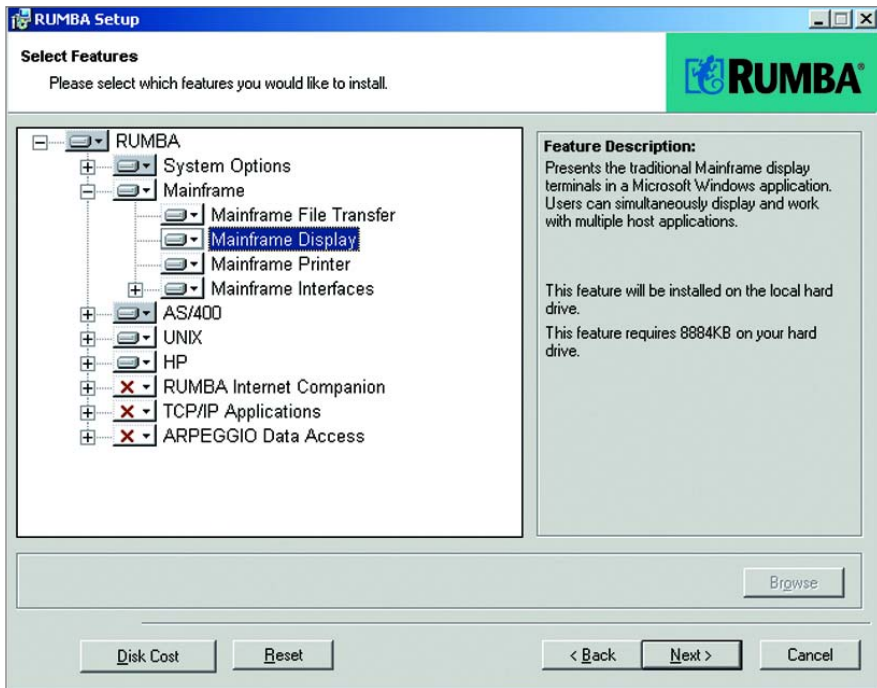
NetManage ONESTEP® technical support programs and consulting services are available to maximize productivity with RUMBA products.

Other important features include:

Microsoft Windows Installer – Robust, reliable Microsoft Installer enables shared resource management, easy application selection and customization, and easier deployment.



RUMBA can be installed on the latest Windows desktops or deployed to Windows clients through a server. This provides easy access to applications and databases on mainframe, AS/400, UNIX, HP, and VAX systems.



Using the Microsoft Installer, you can install RUMBA or selected components to meet the business requirements of your company, departments, or individual users.

InstallShield Tuner – System administrators can create tailored installation packages for Microsoft Systems Management (SMS) or IntelliMirror, providing different configurations for different user groups.

SMS 2.0 Support – RUMBA supports SMS 2.0, reducing deployment time and providing accurate software inventory information.

Microsoft Zero Administration Kit Support – Set user profiles, lock down desktop configurations, and reduce IT support costs by maintaining a consistent desktop across the organization.

System Administrator Menu Configuration – Customize RUMBA menu bars to meet user and organization requirements and reduce training time.

Macro Editor – Produce better macros in less time with point-and-click building and editing.

AS/400 Submit Remote Command – Send commands and receive responses without the overhead of a display session.

Core Connectivity Features in RUMBA Products

RUMBA	3270, 5250 Terminal and Printer Emulation, UNIX-VT, WYSE 50/60 and HP/MPE Terminal Emulation
RUMBA for Citrix and Terminal Server	3270, 5250 Terminal and Printer Emulation, UNIX-VT, WYSE 50/60 and HP/MPE Terminal Emulation
RUMBA Mainframe	3270 Terminal and Printer Emulation
RUMBA AS/400	5250 Terminal and Printer Emulation
RUMBA UNIX-HP	TELNET VT and HP3000 MPE Terminal Emulation, UNIX and HP File Transfer

French and German language versions are also available.

Innovative Productivity Features

In addition to simplifying system administration, RUMBA software offers an extensive set of features that increases user productivity by making it easy to access and leverage host information.

Bookmarks – Speed navigation between multiple host screens.

QuickAssist – Complete data fields automatically and eliminate repetitive keystrokes.

RUMBA Notebook – Integrate and launch multiple host sessions with this intuitive, tab-based tool.

Print Management – Print preview ensures correct formatting and eliminates test print runs and queue management shows printer location and status.

Information Organizer – Point and click to organize reports, queries, transfers, and files in one convenient location.

MPE Native File Transfer – Download HP3000 files and work with data within Windows applications.

Formatted Screen Print – Format and print host-based email messages from single or chained host screens.

Batch File Transfer – Transfer multiple files between PC and host systems and schedule AS/400 file transfers.

Product Specifications and System Requirements

RUMBA, RUMBA Mainframe, RUMBA AS/400, RUMBA UNIX-HP

Server Software

Microsoft Windows XP, Windows 2000, Windows ME, Windows 98SE, Windows NT 4

Server Hardware

PC with Pentium-class processor

- 166 MHz (or faster) for Windows 98SE and Windows ME
- 300 MHz (or faster) for Windows NT, Windows 2000, or Windows XP

32 MB RAM recommended for Windows 98 and Windows ME; 64 MB RAM recommended for Windows NT, Windows 2000, and Windows XP

Full installation of RUMBA requires approximately 90 MB of disk space.

RUMBA for Citrix and Terminal Server

Please refer to Citrix or Microsoft for baseline server specifications. The following guidelines are for RUMBA software:

Server Software

Windows NT 4.0 Terminal Server Edition or Windows 2000 with Windows Terminal services

Server Hardware

5 to 8 MB of RAM with 15 to 20 MB of page file space per user

Citrix MetaFrame software (optional)



Corporate Headquarters

NetManage, Inc.
20883 Stevens Creek Boulevard
Cupertino, CA 95014 U.S.A.
T +1.408.973.7171 F +1.408.257.6405
sales@netmanage.com
For the location of the NetManage office nearest you, visit www.netmanage.com