

Open File Manager™ Datasheet

Product Overview



Powerful Open File Data Protection

Open File Manager™ is the enterprise software that enables your backup application to back up open files in a distributed Windows® or NetWare® environment. This reliable, easy-to-use, disk-level solution ensures that your business runs uninterrupted and protects your mission-critical data 24 hours a day, seven days a week. Since 1995, Open File Manager has been the leading open file management solution with over 300,000 licenses sold. Its rich feature set helps IT professionals automate backup of open files through system-wide volume synchronization, improve application availability and lower operating costs. Open File Manager works seamlessly with the backup software you are using now.

Highlights

- Ensures business continuity and protection of mission-critical data**
 Open File Manager enables your backup software to back up all open and in-use files. You can eliminate downtime due to backup procedures and totally automate your backup process without worry of lost or corrupted files.
- Supports all leading backup vendors**
 It seamlessly works with leading backup software, such as Computer Associates BrightStor ARCserve, VERITAS Backup Exec and NetBackup, IBM Tivoli Storage Manager, Hewlett-Packard Data Protector and many others.
- Scalable architecture**
 Open File Manager scales to as many machines as you require and yet can be managed from one central console.

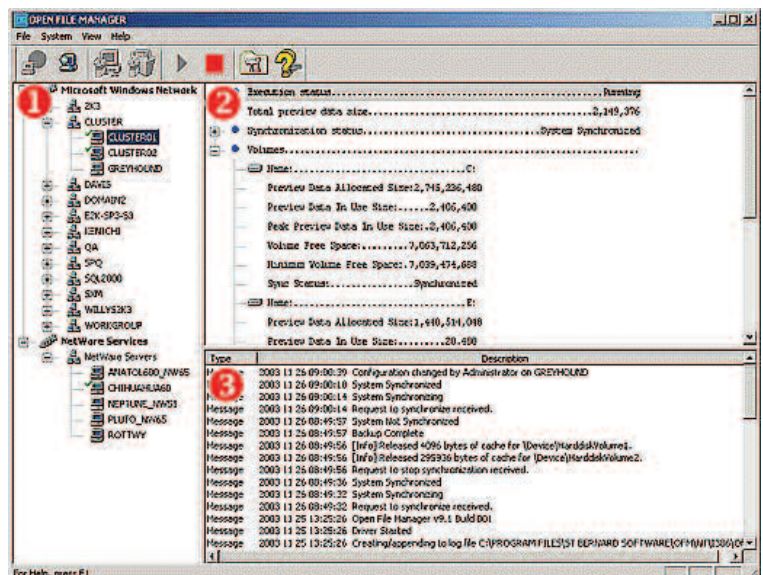
Features

Increases Application Availability

Open File Manager supports data protection in high availability environments, enabling your backup software to back up open and in-use files without taking users offline or interrupting systems use.

Protects Mission-Critical Data

Open File Manager enables your backup software to back up all open and in-use files. Often, traditional backup software either skips open files, resulting in an incomplete backup, or forces back up of open files, which is likely to copy corrupt data to tape if the files are changing. This is not a problem with Open File Manager.



- The Network pane allows you to view the servers on which Open File Manager™ is installed and operating.
- The Status pane allows you to monitor a specific server including cache data and volume synchronization.
- The Log pane allows you to track the progress of system synchronization and related messages.

Features (CONTINUED)

Supports Leading Backup Software

Open File Manager seamlessly works with your backup application to provide a complete data protection solution. It is compatible with over 50 storage management vendors and over 90 leading backup applications. This broad support allows you to migrate between backup vendors without reinvesting in a new open file solution.

Scalable Architecture

Open File Manager is designed for the distributed environment and scales to as many machines as you need. Its client/agent architecture allows you to add additional machines to your enterprise while easily managing them from a central console.

Supports Microsoft and Novell Cluster Server Technology

Open File Manager provides enhanced clustering capabilities for data protection in high availability environments. It automatically detects volume mounts and dismounts. If failover occurs during a backup, Open File Manager will automatically un-synchronize and then re-synchronize, allowing the new volume to join the current backup, ensuring the highest standard for data protection.

Performs Fast Open File Database Replication

Use Open File Manager to make copies of data for system management purposes other than backup. For example, make a copy of a live database, preserving the data integrity of open files, and place it on another machine for training or testing purposes.

Enhances Microsoft Volume Shadow Copy Service Framework

Open File Manager now enhances storage management frameworks such as Microsoft Windows Server 2003 Volume Shadow Copy Service (VSS). Open File Manager has components that integrate with VSS to ensure that legacy and non-VSS compliant business applications are captured correctly.

Open File Manager License Levels

Enterprise Server License for Windows Server 2003 Enterprise and Datacenter; Windows 2000 Advanced Server; Windows NT Server 4.0 Enterprise Edition; NetWare 4.x, 5.x and 6.x LFS and NSS; supports all operating systems offered under the Server and Workstation Licenses.

Server License for Windows Server 2003 Standard and Web; Windows 2000 Server; Windows NT Server 4.0.

Workstation License for Windows XP, Professional and Home Edition; Windows 2000 Professional; Windows NT Workstation 4.0.



System Requirements

Control Component

- Windows Server 2003 Standard, Web, Enterprise and Datacenter
- Windows 2000 Server Standard and Advanced
- Windows NT 4.0 Workstation, Server and Enterprise
- Windows XP Pro and Home
- Windows 2000 Professional
- 10 MB available hard disk space
- Windows and/or NetWare networking, depending on the System Component(s) to be administered

Windows System Component

- Windows Server 2003 Standard, Web, Enterprise and Datacenter
- Windows 2000 Server Standard and Advanced
- Windows NT 4.0 Workstation, Server and Enterprise
- Windows XP Pro and Home
- Windows 2000 Professional
- 5 MB available hard disk space, plus an additional amount to store data changed during backup
- Windows networking
- The computer's local disks are accessible to the Control Component through Administrative Shares
- The computer is visible to the Control Component through the Computer Browser Service

NetWare System Component

- Novell NetWare 6.x LFS and NSS, 5.x LFS and 4.x LFS
- 5 MB available hard disk space, plus an additional amount to store data changed during backup
- NetWare networking, TCP/IP or IPX/SPX-based, with Microsoft or Novell NetWare clients
- The computer is visible to the Control Component through the Computer Browser Service

CORPORATE ADDRESS

15015 Avenue of Science
San Diego, CA 92128

MAIN PHONE: 858-676-2277
TOLL FREE: 800-782-3762
FAX: 858-676-2299
EMAIL: info@stbernard.com
WEB: www.stbernard.com

EUROPEAN ADDRESS

Unit 4, Riverside Way
Watchmoor Park, Camberley,
Surrey GU15 3YQ, United Kingdom

PHONE: +44 (0) 1276-401640
FAX: +44 (0) 1276-684479
EMAIL: info@uk.stbernard.com

© 2005 St. Bernard Software, Inc. All rights reserved. The St. Bernard Software logo, Open File Manager, SecurityEXPERT and ePrism are trademarks of St. Bernard Software Inc. UpdateEXPERT and iPrism are registered trademark of St. Bernard Software Inc. All other trademarks and registered trademarks are hereby acknowledged.